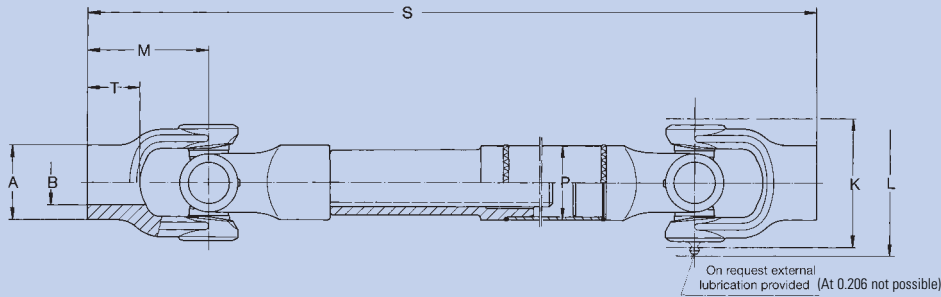
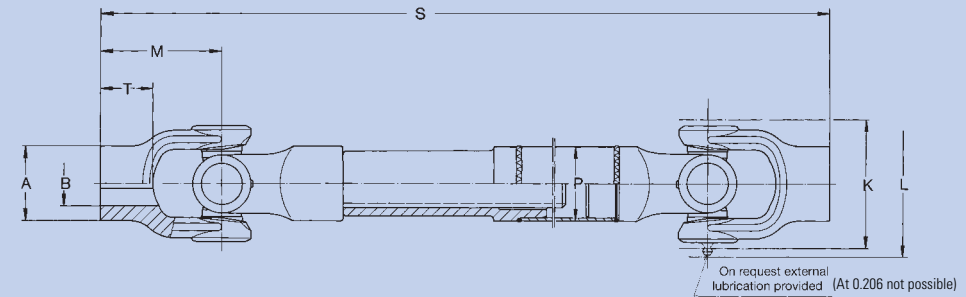


Needle bearing version

One keyway is not enough to transmit the max. torque. In such case a second keyway or an internal spline is recommended.



On both sides connecting hub without key-way end number: 0.204.XX0
0.204.XX1



On both sides connecting hub with key-way end number: 0.204.XX3 Key-way according to DIN 6885 sheet 1
0.204.XX4

Please indicate compressed length „S“, extension and max. r.p.m. when ordering!

Universal Cardan Drive-Shafts with lenght compensation, without key-way

Order number		0.204.100	0.206.100	0.206.101	0.210.100
Md _{max}	Nm	100	250	250	1300
Angle of deflection β	°	35	45	45	45
A approx.	mm	32	43	50	62
B ^{H7}	mm	18	25	30	40
K approx.	mm	44	60	60	98
L approx.	mm	58	–	–	112
M	mm	45	60	75	115
P	mm	32x1,5	40x2	40x2	50x3
S _{min}	mm	260	337	367	655
T	mm	22	30	42	63
X	mm	45	35	35	100
Spline dim. DIN 5480	mm	20x1,5x12	25x1,5x15	25x1,5x15	35x2x16
G (at S _{min})	kg	1,18	2,28	2,77	9,78
G/100 mm standard tube	kg	0,11	0,14	0,14	0,35
G/100 mm extension	kg	0,20	0,31	0,31	0,63

Md_{max} = Maximum permitted torque. See technical annex
β = Maximum angle of deflection
G = Weight (kg)
S_{min} = Minimum compressed length for preferend extension range
X = Preferred extension (larger extensions available up to approx. 10 x spline o. D.)

Please indicate compressed length „S“, extension and max. r.p.m. when ordering!

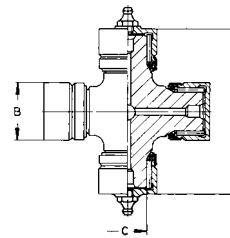
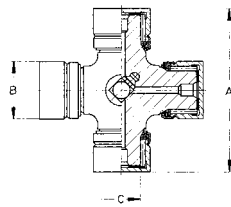
Universal Cardan Drive-Shafts with lenght compensation, with key-way on both sides

Order number		0.204.103	0.206.103	0.206.104	0.210.103
Md _{max}	Nm	100	250	250	1300
Angle of deflection β	°	35	45	45	45
A approx.	mm	32	43	50	62
B ^{H7}	mm	18	25	30	40
K approx.	mm	44	60	60	98
L approx.	mm	58	–	–	112
M	mm	45	60	75	115
P	mm	32x1,5	40x2	40x2	50x3
S _{min}	mm	260	337	367	655
T	mm	22	30	42	63
X	mm	45	35	35	100
Spline dim. DIN 5480	mm	20x1,5x12	25x1,5x15	25x1,5x15	35x2x16
G (at S _{min})	kg	1,18	2,28	2,77	9,78
G/100 mm standard tube	kg	0,11	0,14	0,14	0,35
G/100 mm extension	kg	0,20	0,31	0,31	0,63

Md_{max} = Maximum permitted torque. See technical annex
β = Maximum angle of deflection
G = Weight (kg)
S_{min} = Minimum compressed length for preferend extension range
X = Preferred extension (larger extensions available up to approx. 10 x spline o. D.)

One keyway is not enough to transmit the max. torque. In such case a second keyway or an internal spline is recommended.

Cross Units



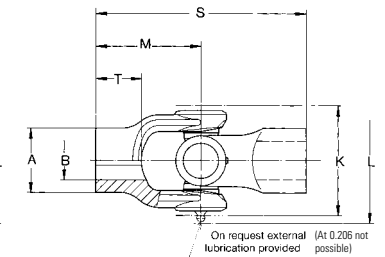
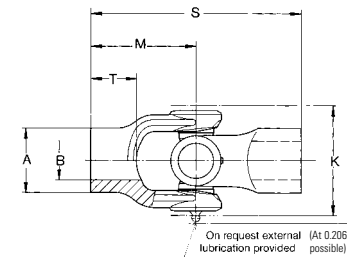
(At 0.206 not possible)

		Needle bearing version		Version for external lubrication Needle Bearing	
		Standard version Needle Bearing		Version for external lubrication Needle Bearing	
Order number		0.204.010	0.106.010		0.204.012
A	mm	36	48		36
B	mm	14	19		14
C	mm	7,7	12,7		7,7
Snap rings included	mm	J 14 x 1	J 19 x 1		J 14 x 1
Weight	kg	0,064	0,143		0,669
used for		0.204	0.206		0.204

		Roller bearing version		Version for external lubrication Roller Bearing	
		Standard version Roller Bearing		Version for external lubrication Roller Bearing	
Order number		0.110.015		0.110.016	
A	mm	83		83	
B	mm	30		30	
C	mm	20,02		20,02	
Snap rings included	mm	J 30 x 1,2		J 30 x 1,2	
Weight	kg	0,66		0,66	
used for		0.210		0.210	

Md_{max} = Maximum permitted torque.
See technical appendage
β = Maximum angle of deflection
G = Weight (kg)

Cardan-Joints single, without key-way **Cardan-Joints single, with key-way**



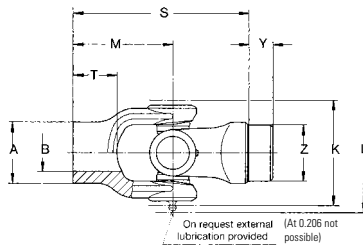
Key-way according to DIN 6885 sheet 1

		Needle bearing version									
		0.204.400	0.204.410	0.206.400	0.206.410	0.210.400	0.204.403	0.204.413	0.206.403	0.206.413	0.210.403
Order number											
Md _{max}	Nm	100	100	250	250	1300	100	100	250	250	1300
Angle of deflection β	°	45	35	45	45	45	45	35	45	45	45
A approx.	mm	35	32	50	43	62	35	32	50	43	62
B ^{H7}	mm	18	18	30	25	40	18	18	30	25	40
K approx.	mm	44	44	60	60	98	44	44	60	60	98
L approx.	mm	58	58	–	–	112	58	58	–	–	112
M	mm	54	45	75	60	115	54	45	75	60	115
S	mm	108	90	150	120	230	108	90	150	120	230
T	mm	35	22	42	30	63	35	22	42	30	63
G (at S)	kg	0,43	0,34	1,22	0,73	3,37	0,43	0,34	1,22	0,73	3,37

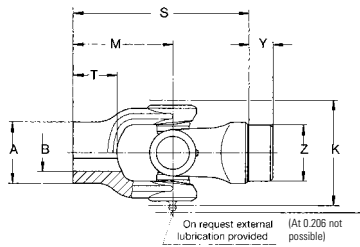
One keyway is not enough to transmit the max. torque. In such case a second keyway or an internal spline is recommended.

Md_{max} = Maximum permitted torque.
See technical appendage
β = Maximum angle of deflection

Fixed Joints, without key-way



Fixed Joints, with key-way



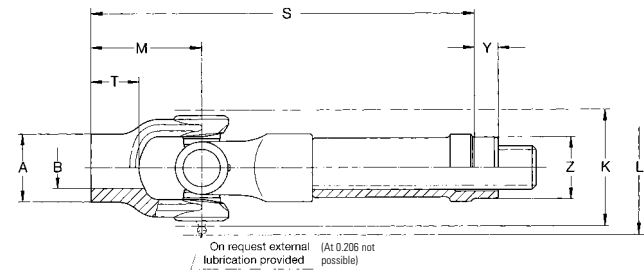
Key-way according to DIN 6885 sheet 1

Needle bearing version

Order number		0.204.050	0.206.050	0.206.051	0.210.050	0.204.053	0.206.053	0.206.054	0.210.053
Md _{max}	Nm	100	250	250	1300	100	250	250	1300
Angle of deflection β	°	35	45	45	45	35	45	45	45
Weight	kg	0,34	0,82	1,07	3,16	0,34	0,82	1,07	3,16
A approx.	mm	32	43	50	62	32	43	50	62
B ^{H7}	mm	18	25	30	40	18	25	30	40
K approx.	mm	44	60	60	98	44	60	60	98
L approx.	mm	58	–	–	112	58	–	–	112
M	mm	45	60	75	115	45	60	75	115
S	mm	74	100	115	185	74	100	115	185
T	mm	22	30	42	63	22	30	42	63
Y	mm	7	20	20	20	7	20	20	20
Z _{k,β}	mm	29,25	37,25	37,25	44,25	29,25	37,25	37,25	44,25

Md_{max} = Maximum permitted torque.
See technical appendage
β = Maximum angle of deflection
X = Preferred extension
(larger extensions available up to approx. 10 x spline o. D.)
G = Weight (kg)

Slip Joints, without key-way



Slip Joints, with key-way

Key-way according to DIN 6885 sheet 1

Needle bearing version

Order number		0.204.070	0.206.070	0.206.071	0.210.070	0.204.073	0.206.073	0.206.074	0.210.073
Md _{max}	Nm	100	250	250	1300	100	250	250	1300
Angle of deflection β	°	35	45	45	45	35	45	45	45
Weight	kg	0,80	1,39	1,63	6,28	0,80	1,39	1,63	6,28
G/100 mm standard tube	kg	0,20	0,31	0,31	0,63	0,20	0,31	0,31	0,63
A approx.	mm	32	43	50	62	32	43	50	62
B ^{H7}	mm	18	25	30	40	18	25	30	40
K approx.	mm	44	60	60	98	44	60	60	98
L	mm	52	–	–	112	52	–	–	112
M	mm	45	60	75	115	45	60	75	115
S	mm	158	190	205	371	158	190	205	371
T	mm	22	30	42	63	22	30	42	63
X	mm	45	35	35	100	45	35	35	100
Y	mm	18	15	15	18	18	15	15	18
Z _{k,β}	mm	29,25	37,25	37,25	44,25	29,25	37,25	37,25	44,25
Spline dim. DIN 5480	mm	20x1,5x12	25x1,5x15	25x1,5x15	35x2x16	20x1,5x12	25x1,5x15	25x1,5x15	35x2x16

Please indicate extension range when ordering!